



Tryon Street Campus

1210 N. Tryon Street
Charlotte, NC 28206
704.334.3187

Open 24/7
All Year

260
Year Round
Bed Capacity

...

Statesville Avenue Campus

3410 Statesville Avenue
Charlotte, NC 28206
704.333.2608

Open 6 pm - 7 am
All Year

240
Year Round
Bed Capacity

...

MSC has the capacity to provide additional shelter during extreme weather events.

500 Beds!

MSC's Goals:

1. Provide immediate access to emergency shelter and meet basic needs for all men experiencing homelessness.
2. Help homeless men identify and overcome barriers related to homelessness including substance addiction, mental illness, unemployment, and health.
3. Help homeless men obtain and maintain more appropriate housing.

MSC's Service Components:

- Emergency Shelter Services
- FOCUS Case Management Services

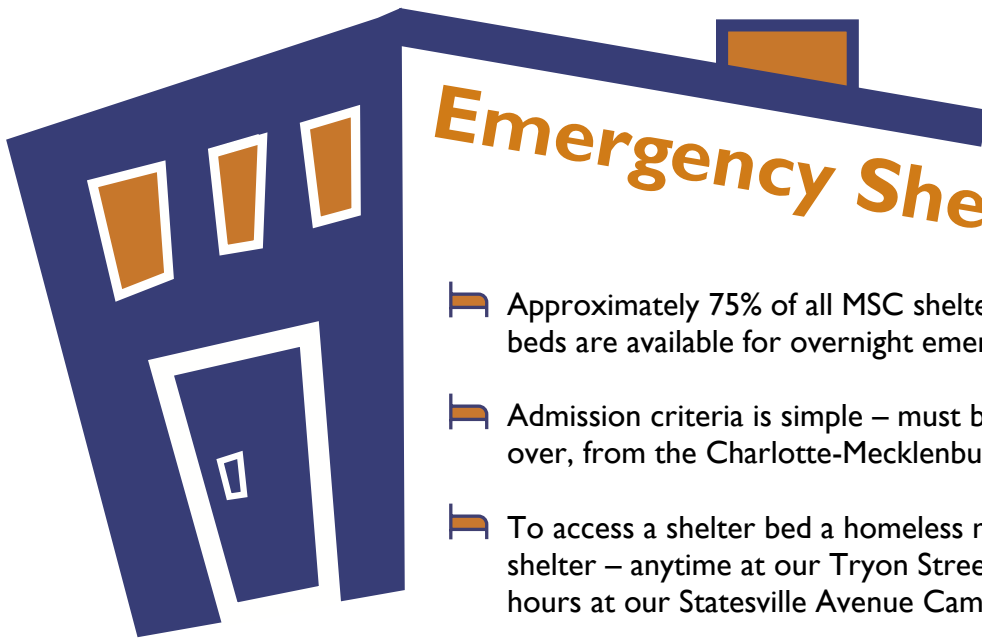
Assistance Available to All Homeless Men Accessing the Men's Shelter of Charlotte:

- Immediate access to safe emergency shelter that meets basic needs including shelter, clothing, showers, and meals
- Three meals per day for men accessing either shelter
- Access to on-site nurse's clinic, dental clinic, and other volunteer healthcare services including a podiatrist and chiropractor
- Access to self-improvement activities including addiction support groups, GED classes, Bible study, social activities, yoga, and a peer support group
- Access to full computer lab for job searches, resume writing, email, and workshops
- Access to telephones, transportation assistance, toiletries, and clothing closet
- Access to on-site social services including:
 - Mecklenburg County Department of Social Services – Medicaid & Food Stamps
 - Mecklenburg County Substance Abuse Treatment Program – SACOT – 42 day intensive outpatient treatment inside the shelter
 - C.W. Williams Community Health Center – nurse's clinic and access to healthcare
 - Mecklenburg County Homeless Support Services – assistance coordinating needed services
 - Veterans Administration – assistance connecting veterans to eligible benefits
- Access to comprehensive case management services through MSC's FOCUS program

Did You Know?

- MSC utilizes approximately 2,000 volunteers each year to assist with providing services?
- Over 60 congregations support MSC's meal services by preparing, serving, and donating meals?
- MSC is the only year round emergency shelter for homeless men in the Charlotte area?
- MSC can provide emergency shelter for a homeless man for about \$20 per night?

For further information and assistance call 704.334.3187
www.MensShelterofCharlotte.org



Emergency Shelter Services

Overview of Services

- Approximately 75% of all MSC shelter beds are available for overnight emergency shelter.
- Admission criteria is simple – must be a homeless man, age 18 or over, from the Charlotte-Mecklenburg County area.
- To access a shelter bed a homeless man can simply come to either shelter – anytime at our Tryon Street Campus and during operating hours at our Statesville Avenue Campus.
- Men accessing our emergency shelters receive a safe place to sleep, meals, access to showers and other basic needs assistance.
- Men accessing our emergency shelters can take advantage of all of the services offered at our Tryon Street Campus (see other side of sheet).
- The emergency shelter, which has dedicated case managers in addition to intake staff on duty at all times, helps stabilize homeless men, prepare them for engagement in our FOCUS program, and get them connected to community-based resources.

FOCUS Case Management Services

FOCUS stands for *Freedom of Opportunity, Committed to Unlimited Success*

- Approximately 25% of all MSC shelter beds are available for FOCUS.
- Admission criteria is simple – any homeless man accessing the emergency shelter who desires comprehensive assistance to identify and overcome barriers related to homelessness is welcome to ask for consideration to be in the program. Some preference is given to homeless men with mental illness, substance addiction, disability, and veterans' status, although all homeless men can participate.
- FOCUS Case Managers have various areas of expertise to assist men dealing with specific issues:
 - Mental Health Support** – provided to men with mental illness including those dually diagnosed with mental illness and substance abuse
 - Substance Abuse Support** – provided to men with alcohol and/or drug addictions including those dually diagnosed with substance abuse and mental illness
 - Veterans Support** – provided to homeless veterans regardless of discharge status, especially those with disabilities
 - Employment Support** – provided to men with specific barriers to employment (i.e. criminal record), lacking employment history, or employed but needing immediate stability
 - Disability Support** – provided to men who are disabled and need assistance navigating the disability determination process (MSC uses the best practice SOAR approach)
 - Medical Respite** – provided to men being discharged from local medical hospitals and needing time to rest and recuperate
 - Continuing Care** – provided to men ready to move out of the shelter in order to help them obtain and maintain more appropriate housing
- Participation in FOCUS is voluntary and men are encouraged to commit to a substance free lifestyle; however MSC understands that relapse is a natural part of recovery and works with men to get back on track when relapse occurs.
- Each FOCUS participant works with his case manager to create an *Individualized Service Plan* that meets his needs and works towards his goals; no arbitrary time limits are placed on length of stay in FOCUS.